

DAILY RESEARCH, 4 MEI 2020

PT PROFINDO SEKURITAS INDONESIA

GD PERMATA KUNINGAN LT 19

JL KUNINGAN MULIA KAV 9C GUNTUR SETIABUDI JAKARTA SELATAN 12980

TELP +62 21 8378 0888

EMAIL : CUSTOMERSERVICE@PROFINDO.COM

WWW.PROFINDO.COM | PROCLICK.PROFINDO.COM

MARKET MOVERS



Bursa Amerika S&P 500 ditutup turun tajam setelah rilis laporan keuangan perusahaan yang mengecewakan dan penurunann saham sektor manufaktur. DOW -2.55%, S&P -2.81%, NASDAQ -3.2%

Bursa saham Eropa ditutup melemah dimana investor masih menantikan hasil rapat Dewan Gubernur European Central Bank. Indeks FTSE -2.34%, DAX -2.22%, CAC -2.12%

Bursa Saham Asia dibuka mayoritas memerah setelah pernyataan President Trump yang akan kembali menaikkan tarif impor China pasca Corona Virus selesai. Indeks Hang Seng +0.28%, Shanghai +1.33%, Nikkei -2.84%, KOSPI -1.99%, STI -3.09%

Harga minyak ditutup melemah setelah makin menipisnya tempat penyimpanan minyak dimana produsen masih memilih melakukan aktivitas pengeboran minyak dari pada menutup sumur minyak. WTI +4.56%, Brent Oil +0.49%, Gold +0.95%.

IHSG pada perdagangan hari ini diperkirakan akan **BULLISH** dengan Range pergerakan **4650-4850** dengan saham-saham yang dapat diperhatikan : **BBRI AKRA PGAS ACES PTBA MEDC**

MARET DATA

AMERIKA

DOW 30	23,723.69	-622.03	-2.55%
S&P 500	2,830.71	-81.72	-2.81%
NASDAQ	8,604.95	-284.60	-3.20%

EUROPE

DAX	10,861.64	-246.10	-2.22%
FTSE 100	5,763.06	-138.15	-2.34%
CAC 40	4,572.18	-98.93	-2.12%

ASIA

SHANGHAI	2,853.27	+30.83	+1.09%
HANGSENG	24,643.59	+67.63	+0.28%
SET	1,301.66	+18.98	+1.48%
KOSPI	1,908.18	-39.38	-2.02%
JCI	4,716.40	+149.08	+3.26%
NIKKEI	19,619.35	-574.34	-2.84%
STI	2,553.22	-71.01	-2.71%

COMMODITIES

GOLD	1,710.25	+16.05	+0.95%
WTI OIL	19.70	+0.86	+4.56%
BRENT OIL	26.61	+0.13	+0.49%
COAL	52.40	-1.15	-2.15%
PALM OIL	2102	+42	+2.04%
TINS	15,002.50	-60.00	-0.40%
NICKEL	11,930.00	-202.50	-1.67%

EVENT & ECONOMIC CALENDER

ECONOMIC CALENDER :

GLOBAL

040520	GERMAN PMI MANUFACTURING (APR)
050520	UK PMI SERVICE (APR)
060520	US CRUDE OIL INVENTORIES US ADP NONFARM EMPLOYMENT CHANGE (APR)
070520	BOE INTEREST RATE DECISION (MAY) BOE INFLATION REPORT US INITIAL JOBLESS CLAIMS
080520	US NONDAEM PAYROLLS (APR)

CORPORATE ACTION :

DEVIDEN

CUM 0505 RP 48.2 (PAYMENT 2005)

RUPS

0405	NICK
0505	TOWR PNSE EPMT ECII
0605	LUCK BNTT
0805	DNAR DIGI

IPO

0405 CASH RP 350

RIGTH ISSUE

WARRANT

CASH-W RATIO 1:1, EXERCISE PRICE RP 500

JAKARTA COMPOSITE INDEX



PREVIOUS 30 APRIL 2020

CLOSING	4716.403	+3.264%
TRANSACTION	IDR 10.3 TRILLION	
FOREIGN NETT	IDR 431 BIO (BUY)	

PREDICTION 4 MEI 2020

BULLISH
RANGE 4650-4850

BULL FLAG
STOCHASTIC : UPTREND
MACD : HISTOGRAM POSITIF DAN UPTREND

TECHNICAL RECOMENDATION



**BBRI – PT BANK RAKYAT INDONESIAI (PERSERO)
TBK**

CLOSING 30/4/2020 RP 2730 (+5.8%)

**BUY
TARGET PRICE 3670
STOPLOSS < 2700**

BREAK OUT TRIANGLE
STOCHASTIC : GOLDEN CROSS
MACD : HISTOGRAM POSITIF DAN UPTREND

TECHNICAL RECOMENDATION



AKRA – PT AKR CORPORINDO TBK

CLOSING 30/4/2020 RP 2400 (+7.1%)

BUY

TARGET PRICE 2650

STOPLOSS < 2350

BREAK OUT RISING WEDGE

STOCHASTIC : UPTREND

MACD : HISTOGRAM POSITIF DAN UPTREND

TECHNICAL RECOMENDATION



PGAS – PT PERUSAHAAN GAS NEGARA TBK

CLOSING 30/4/2020 RP 855 (+8.2%)

BUY

TARGET PRICE 920

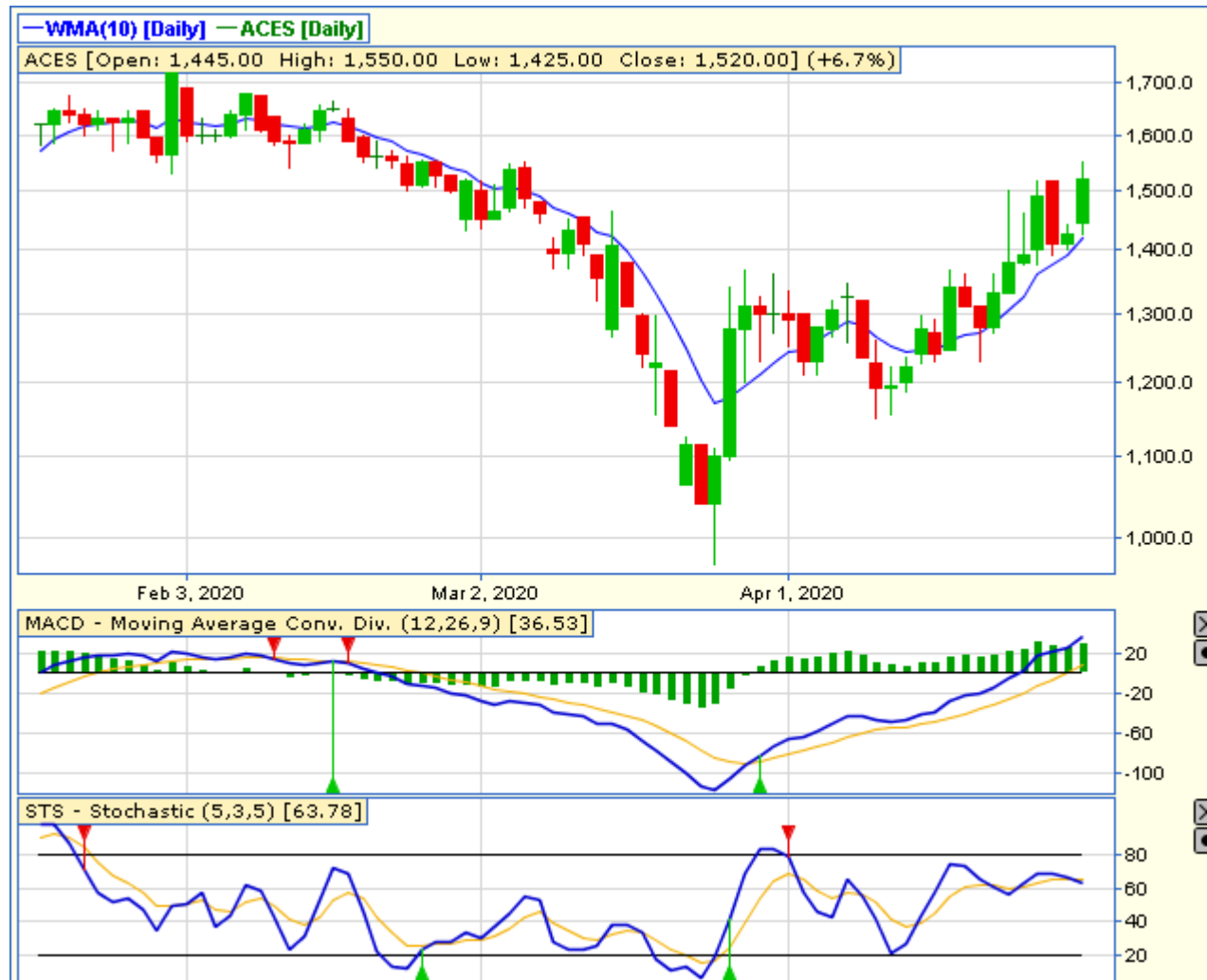
STOPLOSS < 840

BREAK OUT TRIANGLE

STOCHASTIC : UPTREND

MACD : HISTOGRAM POSITIF DAN UPTREND

TECHNICAL RECOMENDATION



ACES – PT ACE HARDWARE INDONESIA TBK

CLOSING 30/4/2020 Rp 1520 (+6.7%)

BUY

TARGET PRICE 1720

STOPLOSS < 1495

BREAK OUT RISING WEDGE

STOCHASTIC : BERSIAP GOLDEN CROSS

MACD : HISTOGRAM POSITIF DAN UPTREND

TECHNICAL RECOMENDATION



PTBA – PT BUKIT ASAM TBK

CLOSING 30/04/2020 RP 1875 (+4.7%)

BUY

TARGET PRICE 1960

STOPLOSS 1840

BREAK OUT FALLING WEDGE

STOCHASTIC : GOLDEN CROSS

**MACD : HISTOGRAM NEGATIF MENGECIL DAN
BERSIAP GOLDEN CROSS**

TECHNICAL RECOMENDATION



MEDC – PT MEDCO ENERGI INTERNASIONAL TBK

CLOSING 30/4/2020 RP 450 (+10.8%)

BUY

TARGET PRICE 525

STOPLOSS <

BREAK OUT TRIANGLE

STOCHASTIC : UPTREND

MACD : HISTOGRAM POSITIF DAN GOLDEN CROSS

RESEARCH TEAM



YULIANA

**RESEARCH ANALYST &
CORPORATE FINANCE**



DIMAS WP PRATAMA, CSA

TECHNICAL ANALYST

EQUITY CAPITAL MARKET TEAM



JESSIE JAMES

HEAD OF EQUITY SALES



PRASETYO NUGROHO

HEAD OF DEALING ROOM



GABRIELLA PRATIWY

HEAD OF ONLINE TRADING